

Fybre[®] Product Specifications

Fybre[®] Hydrous Sheets are designed to give optimal results in paper making processes. Delivery parcels contain 150 to 170 sheets wrapped in polyethylene film to preserve quality.



1 bale*



Pallet loading

*1 bale
approximately 70cm(L) × 60cm(W) × 65cm(H),
Weight differs with series.

210Kg : E series

170Kg : NL series, AU series

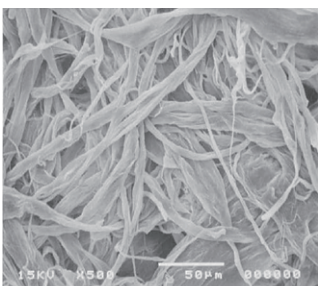
- Air dry weight (ADKg) listed on all bale labels.
- Fybre[®] trading unit includes air dry weight and 10% moisture.
- Air dry weight = gross weight × (100 - moisture content) / 90

■ Fybre[®] Series Chart

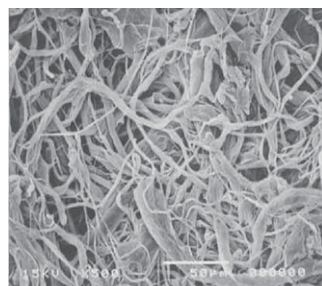
| Grade | Series | Melting Point (°C) | Canadian Standard Freeness Method (mL) | Average Fiber Length (mm) | Moisture Content (%) | Fiber Diameter | Main Characteristics | Main Applications |
|-------------------------|--------|--------------------|--|---------------------------|----------------------|----------------|--|--|
| E Series (PE) | E400 | 135 | 580 | 0.9 | 63 | Standard | Superior texture composition | Paper/Construction material |
| | E524 | | 340 | 1.2 | 57 | Standard | Excellent bonding between fibers | Construction material |
| | E620 | | 340 | 1.2 | 64 | Standard | | General Purpose Grades (Paper/construction material, etc.) |
| | E690 | | 700 | 1.3 | 53 | Standard | High drainage properties | Tea bags Coffee pods |
| | E790 | | 680 | 1.5 | 50 | Standard | Long fibers/ High drainage properties | |
| | EST-8 | | 540 | 0.9 | 59 | Fine | Fine fibers | Special paper |
| NL Series (Modified PE) | NL491 | 100 | 720 | 1.0 | 55 | Thick | Hot tack Low melting point | Tea bags Coffee pods |
| AU Series (Modified PE) | AU690 | 120 | 680 | 1.2 | 52 | Thick | Excellent adhesive properties Low melting point | |

All properties are representative measurement figures obtained under specified test methods at Mitsui Chemicals, Inc. and are not guaranteed as specifications.

■ Microscopic Photo



Standard fiber (E400)



Fine fiber (EST-8)

Fybre is registered trademark of Mitsui Chemicals, Inc. in USA and Canada.



MITSUI CHEMICALS, INC.
Synthetic Pulp Department
Personal Care Materials Division
Life & Healthcare Solutions Business Sector
 Tokyo Midtown Yaesu, Yaesu Central Tower
 2-2-1 Yaesu, Chuo-ku, Tokyo 104-0028, Japan
 TEL: +81-3-6880-7451 FAX: +81-3-6880-7561