

## Global Network

(As of March 31, 2019)



■ : Countries in which the Group operates

### Major Subsidiaries and Affiliates (Equity-method affiliates indicated with asterisks)

Companies	Location	Paid-in Capital (In millions)	Equity Interest (%)	Major Products or Lines of Business
<b>Mobility</b>				
Advanced Composites, Inc.	U.S.A.	USD 14	61.8	Polypropylene compounds
Grand Siam Composites Co., Ltd.	Thailand	THB 64	47.1	Polypropylene compounds
Mitsui Elastomers Singapore Pte. Ltd.	Singapore	USD 96	100.0	Elastomer
Advanced Composites Mexicana S.A. de C.V.	Mexico	USD 3	61.8	Polypropylene compounds
Mitsui Advanced Composites (Zhongshan) Co., Ltd.	China	CNY 117	63.0	Polypropylene compounds
Mitsui Chemicals Industrial Products, Co., Ltd.	Bunkyo-ku, Tokyo	JPY 400	100.0	Civil engineering and construction materials, and piping materials for synthetic resins
Mitsui Prime Advanced Composites India Pvt. Ltd.	India	INR 2,450	84.0	Polypropylene compounds
Mitsui Prime Advanced Composites do Brasil Indústria e Comércio de Compostos Plásticos S.A.	Brazil	BRL 107	93.0	Polypropylene compounds
Mitsui Prime Advanced Composites Europe B.V.	Netherlands	EUR 18	81.5	Polypropylene compounds
ARRK Corporation	Osaka City, Osaka	JPY 2,000	74.7	Industrial products for automobiles
ARRK Product Development Group Ltd.	U.K.	GBP 20	74.7	Industrial products for automobiles
Shapers' France SASU	France	EUR 26	74.7	Industrial products for automobiles
ARRK Corporation (Thailand) Ltd.	Thailand	THB 1,180	74.7	Industrial products for automobiles
Chemours-Mitsui Fluoroproducts Co., Ltd.*	Minato-ku, Tokyo	JPY 2,880	50.0	Fluorocarbon resins and gases, and other related chemicals
Dow-Mitsui Polychemicals Co., Ltd.*	Minato-ku, Tokyo	JPY 6,480	50.0	Ethylene vinyl acetate copolymers and other ethylenic copolymers
(On April 1, 2019, company name changed from Du Pont-Mitsui Polychemicals Co., Ltd.)				
<b>Health Care</b>				
Kulzer GmbH	Germany	EUR 25	80.0	Dental materials
Mitsui Fine Chemicals, Inc.	Chuo-ku, Tokyo	JPY 400	100.0	Fine chemical products and inorganic chemicals
Kulzer, LLC	U.S.A.	USD 6	80.0	Dental materials
Mitsui Hygiene Materials Thailand Co., Ltd.	Thailand	THB 1,310	100.0	Hygiene materials
SDC Technologies, Inc.	U.S.A.	USD 84	100.0	High-performance coating materials for plastics and nonferrous metals
Mitsui Chemicals Nonwovens (Tianjin) Co., Ltd.	China	CNY 470	100.0	Nonwoven fabrics for hygiene materials

## Domestic Sites

(As of March 31, 2019)

### Head office and branches

Head Office (Tokyo)  
Nagoya Branch  
Osaka Branch  
Fukuoka Branch

### Works

Ichihara Works  
Mobara Branch Factory  
Nagoya Works  
Osaka Works  
Iwakuni-Ohtake Works  
Omuta Works

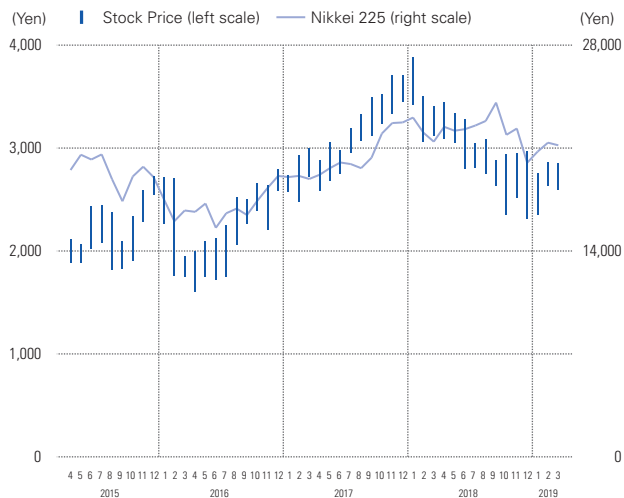
### R&D site

R&D Center

Companies	Location	Paid-in Capital (In millions)	Equity Interest (%)	Major Products or Lines of Business
<b>Food &amp; Packaging</b>				
Mitsui Chemicals Tohcello, Inc.	Chiyoda-ku, Tokyo	JPY 3,450	100.0	Synthetic resin films
Mitsui Chemicals Agro, Inc.	Chuo-ku, Tokyo	JPY 350	100.0	Agrochemicals
Japan Composite Co., Ltd.	Chuo-ku, Tokyo	JPY 1,005	65.0	Unsaturated polyester resins and molding materials
Anderson Development Company	U.S.A.	USD 1	100.0	Specialty chemicals
<b>Basic Materials</b>				
Prime Polymer Co., Ltd.	Minato-ku, Tokyo	JPY 20,000	65.0	Polyethylene and polypropylene
Mitsui Phenols Singapore Pte. Ltd.	Singapore	USD 120	95.0	Phenol, acetone and bisphenol-A
Prime Evolve Singapore Pte. Ltd.	Singapore	USD 115	52.0	Polyethylene
Evolve Japan Co., Ltd.	Minato-ku, Tokyo	JPY 100	48.8	Polyethylene
Shimonoseki Mitsui Chemicals, Inc.	Shimonoseki, Yamaguchi	JPY 490	100.0	Phosphoric acid and gases
Shanghai Sinopec Mitsui Chemicals, Co., Ltd.*	China	CNY 2,347	50.0	Phenol, acetone and bisphenol-A
Mitsui Chemicals & SKC Polyurethanes Inc.*	South Korea	KRW 70,006	50.0	Development, manufacturing, and sales of polyurethane materials
<b>Others</b>				
Mitsui Chemicals Europe GmbH	Germany	EUR 1	100.0	Sales and marketing of Mitsui Chemicals products, representative office function, and support of headquarters
Mitsui Chemicals America, Inc.	U.S.A.	USD 176	100.0	Sales and marketing of Mitsui Chemicals products, representative office function, and support of headquarters
Mitsui Chemicals (China) Co., Ltd.	China	CNY 59	100.0	Sales and marketing of Mitsui Chemicals products, representative office function, and support of headquarters
Taiwan Mitsui Chemicals, Inc.	Taiwan	TWD 28	100.0	Sales and marketing of Mitsui Chemicals products in Taiwan
Kyowa Industrial Co., Ltd.	Sanjo City, Niigata	JPY 95	100.0	Sales and manufacture of molds
Mitsui Chemicals Asia Pacific, Ltd.	Singapore	USD 2	100.0	Sales and marketing of Mitsui Chemicals products, representative office function, and support of headquarters

## Stock Information

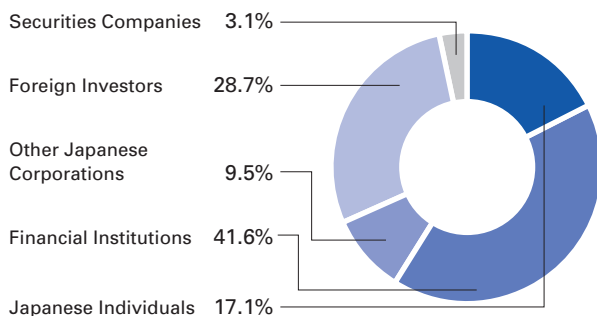
### Common Stock Price Range



\*On October 1, 2017, Mitsui Chemicals conducted a 5-to-1 share consolidation. Stock prices have been recalculated based on this share consolidation.

### Composition of Shareholders

(As of March 31, 2019)



## Corporate Information

(As of March 31, 2019)

<b>Date of Establishment</b>	October 1, 1997
<b>Paid-in Capital</b>	¥125,125,600,699
<b>Number of Employees</b>	17,743 (Consolidated)
<b>Subsidiaries and Affiliates</b>	Consolidated subsidiaries: Domestic 36 Overseas 88 Equity-method affiliates: Domestic 12 Overseas 19
<b>Shares of Common Stock Issued and Outstanding</b>	204,510,215
<b>Number of Shareholders</b>	66,332
<b>Stock Exchange Listing</b>	1st Section, Tokyo Stock Exchange
<b>Transfer Agent</b>	Sumitomo Mitsui Trust Bank, Limited

### Major Shareholders

(As of March 31, 2019)

Major Shareholders	Number of shares held (Thousands)	Percentage of shares held (%)
Japan Trustee Services Bank, Ltd. (Trust account)	16,978	8.70
The Master Trust Bank of Japan, Ltd. (Trust account)	16,185	8.29
Japan Trustee Services Bank, Ltd. (Trust account 4)	4,384	2.24
Japan Trustee Services Bank, Ltd. (Trust account 5)	3,496	1.79
Mitsui & Co., Ltd.	3,474	1.78
Japan Trustee Services Bank, Ltd. (Sumitomo Mitsui Trust Bank, Limited Re-trust account, Mitsui & Co., Ltd. Pension trust account)	3,474	1.78
The Nomura Trust and Banking Co., Ltd. (Trust Account)	3,154	1.61
Japan Trustee Services Bank, Ltd. (Trust Account 7)	3,035	1.55
Toray Industries, Inc.	2,985	1.53
STATE STREET BANK WEST CLIENT – TREATY 505234	2,815	1.44

Note: The company's holdings of treasury stock (9,452,793 shares) are not included in the above figures.

### Credit Ratings

(As of March 31, 2019)

Rating agencies	Rating
Japan Credit Rating Agency, Ltd. (JCR)	<b>A+</b>
Rating and Investment Information, Inc. (R&I)	<b>A</b>

### Offices

**Head Office** Shiodome City Center, 1-5-2 Higashi-Shimbashi, Minato-ku, Tokyo 105-7122, Japan  
Phone: +81-3-6253-2100  
Facsimile: +81-3-6253-4245

**U.S.A.** **Mitsui Chemicals America, Inc.**  
800 Westchester Avenue, Suite S306, Rye Brook, NY 10573, U.S.A.  
Phone: +1-914-253-0777  
Facsimile: +1-914-253-0790

**Germany** **Mitsui Chemicals Europe GmbH**  
Oststr. 34, 40211 Düsseldorf, Germany  
Phone: +49-211-17332-0  
Facsimile: +49-211-17332-701

**Singapore** **Mitsui Chemicals Asia Pacific, Ltd.**  
3 HarbourFront Place, #10-01 HarbourFront Tower 2, Singapore 099254, Singapore  
Phone: +65-6534-2611  
Facsimile: +65-6535-5161

**China** **Mitsui Chemicals (China) Co., Ltd.**  
21F, Capital Square, 268 Hengtong Road, Jing'an District, Shanghai, 200070, P. R. China  
Phone: +86-21-5888-6336  
Facsimile: +86-21-5888-6337