

February 27, 2009

Mitsui Chemicals, Inc.

### **Mitsui Chemicals To Reorganization Business Structure**

Mitsui Chemicals, Inc. (“MCI”) (Kenji Fujiyoshi, President & CEO) announced today that it will reorganize its business structure effective April 1 2009 to respond to the challenges of the current difficult financial environment and actualize goals of the “Grand Design”. (Note 1)

*Note 1: Grand Design is the basic framework of MCI Group management, consisting of Corporate Vision, Business Plans and Action Guidelines compiled in 2007 to set roadmap for corporate growth over the next 10 to 15 years.*

#### 1. Purpose of Reorganization

- Intensify profitability and inter-company collaboration between related business operations to accelerate growth and expansion
- Intensify actualization of the Three Dimensional Strategy (Note 2)

*Note 2 Three Dimensional Strategy is the MCI Group management ideal, consisting of a balance between Economic Dimension, Environmental Dimension, and Social Dimension.*

#### 2. Outline of Reorganization (Refer to Appendix for Organization Details)

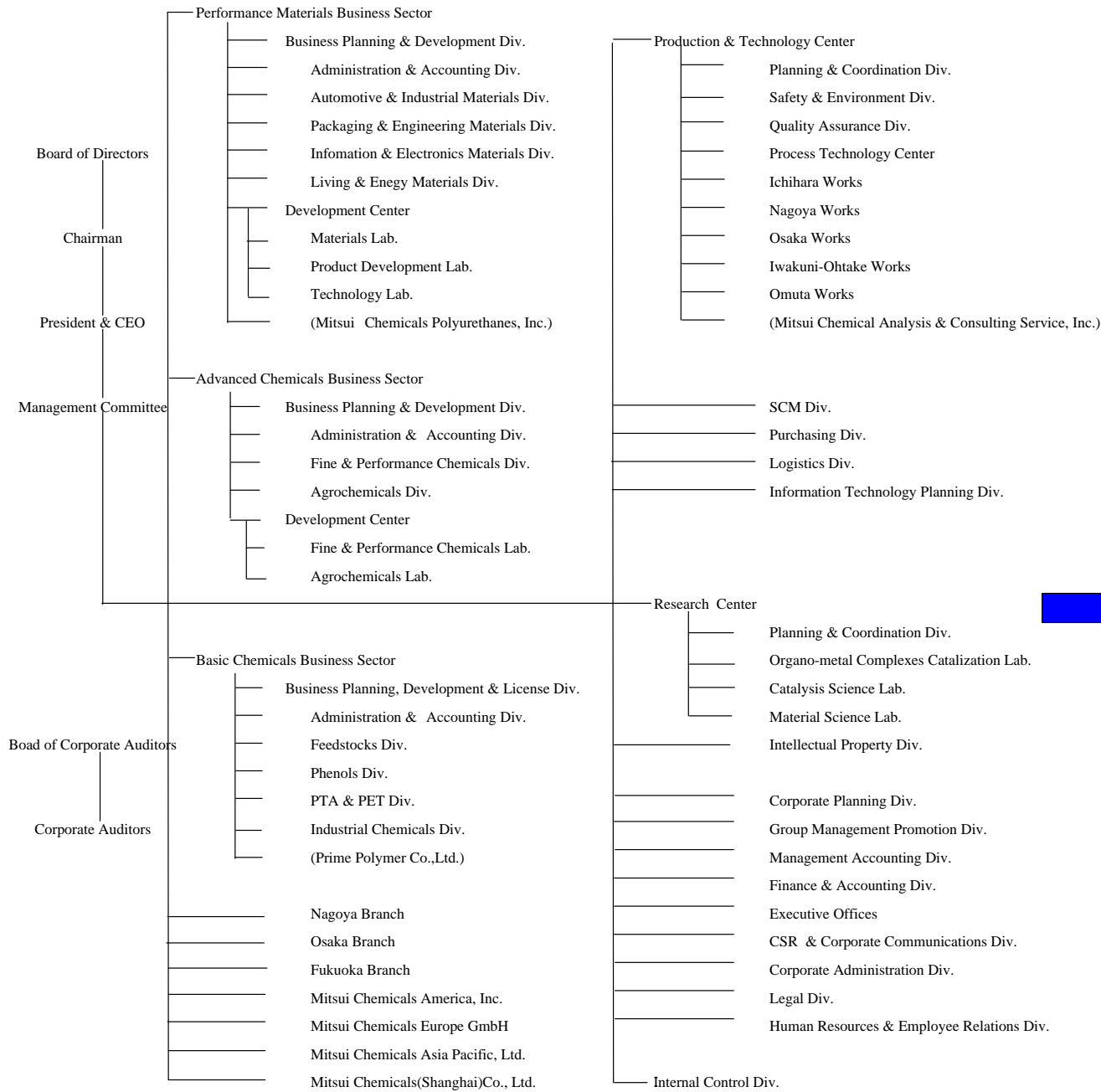
Category	Details
①Business Sectors	<b>&lt;Performance Materials Business Sector&gt;</b> <u>Integrate Mitsui Chemicals Polyurethanes, Inc. (“MCPU”) with MCI</u> a) Incorporate the Foam Materials Development Division of Mitsui Chemicals Polyurethanes, Inc. (“MCPU”) with MCI’s Polyurethane Division. b) Incorporate MCPU’s CASE Materials Development Division with MCI’s Packaging & Engineering Division to form a new Coating & Engineering Materials Division in MCI. c) Conjoin MCPU’s Production & Technology Division with MCI’s Materials Laboratory of the Development Center.
	<b>&lt;Advanced Chemicals Business Sector&gt;</b> <u>Merge Agrochemicals Division with Sankyo Agro Co., Ltd.!</u> a) Consolidate the Agrochemicals Division and Agrochemicals Laboratory of the Development Center with Sankyo Agro Co., Ltd. to form “Mitsui Chemicals Agro, Inc.” (name change effective April 1 2009). b) Conjoin Business Planning & Development and Administration & Accounting Divisions to form Business Planning, Development & Administration Division.

	c) Conjoin Development Center's Fine & Performance Chemicals Laboratory with Fine & Performance Chemicals Division.
②Production & Technology Center	<u>MCI reorganization following integration of MCPU</u> a) Incorporate MCPU's Kashima Works as MCI Kashima Works under the Production & Technology Center. b) MCPU's Tokuyama Factory will be conjoined with the Iwakuni-Ohtake Works as the Tokuyama Branch Factory.
③Supply Chain Management Center (new)	Establish Supply Chain Management Center to consolidate Planning & Coordination*, Purchasing, Logistics and Information Technology Planning Divisions. (*Current SCM Division will be reorganized as the Planning & Coordination Division of the Supply Chain Management Center)
④Research Center	Incorporate Intellectual Property Division into the Research Center.
⑤Corporate Social Responsibility Center (new)	Establish Corporate Social Responsibility Center to consolidate divisions with social/environment-related functions such as: CSR & Corporate Communications, Safety & Environment, Quality Assurance, Corporate Administration Division*, Legal, and Human Resources & Employee Relations Divisions.  (Executive Offices will be consolidated with Corporate Administration Division)
⑥Corporate Management Center (new)	Establish Corporate Management Center and consolidate Corporate Planning, Group Management, and Management Accounting Divisions.
⑦Other	IR Department (currently part of the CSR & Corporate Communications Division) will be placed under the Finance & Accounting Division. The division will be renamed Finance, Accounting & IR Division.

3. Effective Date of Reorganization: April 1, 2009

# Mitsui Chemicals Organization Chart

## Current Organization



## Reorganization (on April 1, 2009)

