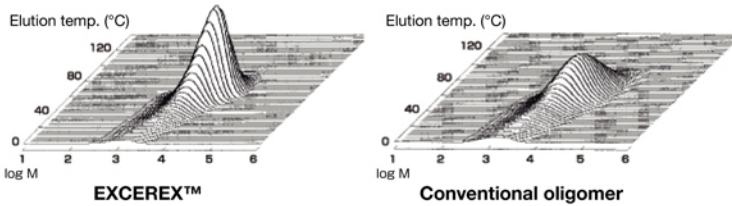


EXCEREX™

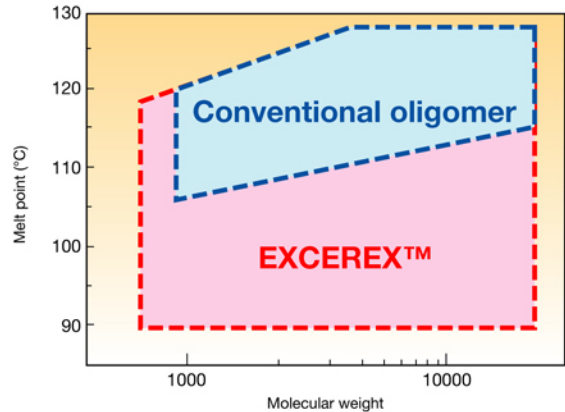
EXCEREX™ is an innovative processing improvement agent created with metallocene catalysis technology. EXCEREX™ gains in a number of areas simultaneously, including faster processing speeds, lower resin temperatures, reduced scorching, and reduced changeover times.

Narrow composition & molecular weight distribution



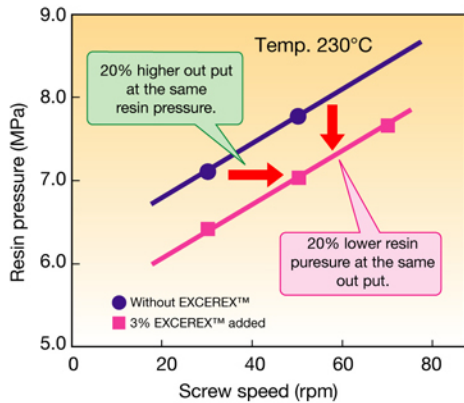
- Narrow composition distribution → Lower proportion of sticky component
 - Narrow molecular weight distribution → Excellent dispersability (uniformity)
- Excellent compatibility

Wide range of production possibilities

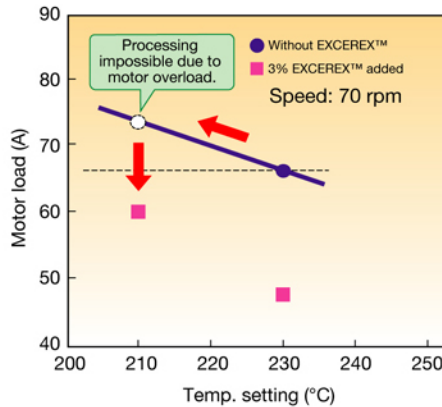


By adding a small amount (dry blending) to the raw material

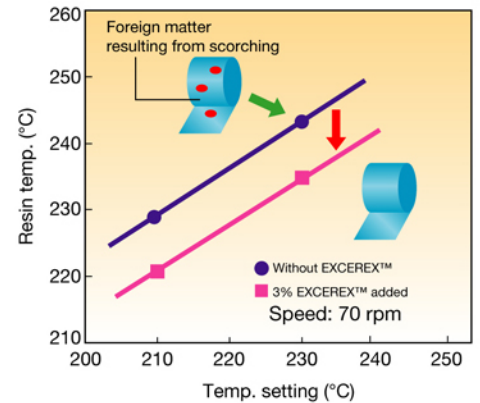
- Increased productivity
- Lower processing temperature for fewer defects
- No adverse effects on physical properties or appearance



Even at the same resin pressure, screw speed can be increased



Temperature setting can be lowered



Lower processing temperature means a lower rate of defects

Examples of improvements in processing performance

