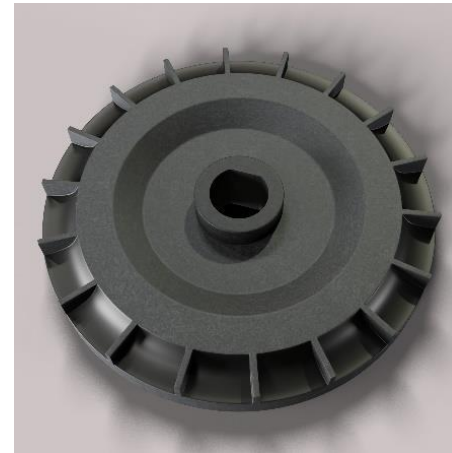




artificial dialysis machine



high-precision gear

【Conventional material】

Metal, other thermoplastic materials (PEEK, PES)

【Issues of conventional materials】

Metal: corroded

Resin: part dimensional stability, chemical resistance

【Required characteristic】

Dimensional Stability, Chemical resistance

AURUM™ Advantage

- Part accuracy (low warp)
- Chemical resistance
- Corrosivity

High precision gear (discharge of liquid) can be created, and discharge amount is stable.



Recommended grade : JCF3025